

123 YEARS OF GIFA



# ANNUAL REPORT 2023

# CONTENTS

2023 MANAGEMENT COMMITTEE	4
2023 COMMITTEE CONVENORS	6
PRESIDENT'S REPORT	8
VICE PRESIDENT'S REPORT	10
TREASURERS REPORT	12
EXECUTIVE MANAGER'S REPORT	14
PRACTICE COMMITTEE REPORT	18
EDUCATION COMMITTEE REPORT	20
- CPD SUB-COMMITTEE REPORT	
-YOUNG PROFESSIONAL FORUM REPORT	22
HERITAGE COMMITTEE REPORT	24

UNIVERSAL DESIGN COMMITTEE REPORT	<b>26</b>
SOCIAL MEDIA AND WEBSITE REPORT	<b>28</b>
LIST OF GIFA MEMBERS	<b>30</b>
SPONSORS	<b>34</b>



**Arch. Olivier Galenge**  
GfA President



**Arch. Janet Saaiman**  
GfA Vice President

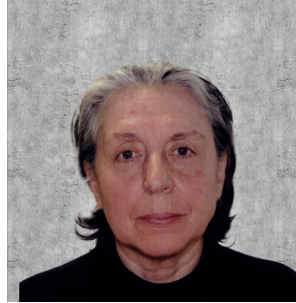
## MANAGEMENT COMMITTEE

---

2023



**Arch. Daniel van der Merwe**  
GifA Treasurer



**Arch. Nora Heredia**  
GifA Secretary



**Arch. Nadira Haripersadh**  
Co - opted Member

# COMMITTEE CONVENORS

2023



**Arch. Maria Paschini**  
Practice Committee Convenor



**Arch. Monica Albonico**  
Education Committee Convenor



**Arch. Nomonde Gwebu**  
Young Professionals Forum Convenor



**Arch. Amanda Breytenbach**  
Heritage Committee Convenor



**Arch. Nadira Haripersadh**  
Universal Design Committee Convenor



# GIFA PRESIDENT REPORT 2023

**"THE BEST WAY TO FIND YOURSELF IS  
TO LOSE YOURSELF IN THE SERVICE OF  
OTHERS"**

MAHATMA GHANDI

---

In accordance with our constitution, my presidential term ends with this general assembly. I am honoured to have served the institution voluntarily within the transformation committee, as the Vice-President (2020-2021), and as the President (2022-2023).

Transformation has always been the key to preserving the profession and it remains a priority in our organisation. At GifA, we focus on advancing diversity and inclusion, through the Young Professionals Forum (YPF) we invest in young students, and professionals through several programs, initiatives, and mentorship. We encourage gender equality and equity and urge female architects to get more involved.



The year 2023 was wonderfully blessed with many activities held within the institution. GIfA has a new committee “Universal Design”, created by Architect Nadira Haripersadh, who joined the ManCom team together with Architect Nicholas Mallandain. as a Deputy Treasurer.

Our Heritage Committee convened by Amanda Breytenbach, Senior Lecture at the Faculty of Art, Design & Architecture UJ had the privilege of organizing the 2023 Venice Biennale lecture series, curated by Prof Lesly Lokko. We had the New Architecture Now exhibition at the SAIA offices curated by Papercut Studio with the mentorship of Alex Oppen. GIfA Award of Merit 2023, has been very successful and , we received a record of 36 submissions. This cycle of awards has enhanced the standards of the practice and the rendering of architectural services to corporate, government, or to private clients.

GIfA has tremendously developed its social media presence and offers quality online CPD courses. Please register on the site and its platforms to receive all communications. We also had the privilege to welcome our new Executive Manager Louda Van Der Merwe who joined GIfA this year.

We look forward to the architecture (AZA)2024 under the auspices of SAIA and in partnership with the Graduate School of Architecture at the University of Johannesburg which will be co-hosted by GIfA next year.

I call on all members to join GIfA and be part of the change. Let us stand as activists to protect, fight, and preserve the value of the profession. We need more volunteers to join various GIfA committees; Practice, Heritage, Education, Young Professionals Forum, Universal Design etc... We have our practice breakfast meeting every 1st Thursday of the month in Rosebank.

I would like to thank the ManCom team; it has been such a blessing working with good spirits. I extend my gratitude to all GIfA champions representing our various committees, our office staff for their continuous hard work, and our esteemed members for your loyalty. A special thank you to all our sponsors, partners, stakeholders, and the Graduate School of Architecture (GSA) of the University of Johannesburg for making this possible.

**Arch. Olivier Galenge**



## GIFA VICE PRESIDENT REPORT 2023

---

2023 was a busy year. With more and more businesses returning to offices, in-person events are increasing and well attended. Our online events remain popular. We strive to keep costs down for our members and provide free events where possible. Our independent service providers offer stellar services with discounts to our members and promote excellent courses in architecture and related fields. Thank you to all involved.

We attended numerous meetings organised by SAIA, discussing the relevance of the VAs and the future of our profession. We are happy to announce that SAIA, in collaboration with the Department of Architecture and the Graduate School of Architecture at the University of Johannesburg, will host the AZA event in 2024. The last one was in 2018, and this is something to look forward to.

Together with the Young Professional Forum and the input from the Education Committee, the Papercut Studio was established by Nomonde Gwebu. It is a platform to provide experience and income for students and young professionals. They are doing it under mentorship, and we hope this will grow and our members will use this service and, if possible, assist with mentorship.

The Education Committee, under the leadership of Arch Monica Albonico and Alex Oppen, and the curatorship of Nomonde Gwebu and Papercut Studio, organised the New Architecture Now Exhibition in September. They showcased work from the four schools of architecture in Gauteng. This event was well attended and received a lot of positive feedback, and we hope to make this an annual event.

The Architecture scene this year was dominated by the 2023 Venice Biennale curated by Prof. Lesley Lokko, which saw

many of our members and academics from our universities participating. Under the leadership of Arch Brendan Hart and Arch Yasmin Mayat, our Heritage Committee organised a series of outstanding and informative lectures.

Arch Nadira Haripersadh established a Universal Design Committee to focus on education and providing information regarding this relevant aspect of architecture and design. They have been very active with presentations to government bodies and raising awareness. We wish them all the best with their campaign.

We continue building our website, and our connections on our Social media networks are growing steadily. Please keep tagging us if you want us to share anything. We had to clean our database thoroughly and urge all to register on the website to ensure you receive all communication. We welcome any contributions and suggestions.

We welcomed Arch Nadira Haripersadh and Arch Nick Mallandain to our ManCom during the year. I want to thank all Mancom members for making it dynamic and effective. A special thank you to our Treasurer, Arch Daniel van der Merwe, for his infinite patience in dealing with the bank and SARS, and our President, Arch Olivier Galenge, who is always there to listen and advise.

At the beginning of the year, we welcomed our new Executive Manager, Louisa van der Merwe. She started on a run and has not stopped. She has been an invaluable asset to GifA, and we thank her for her hard work and attention to detail. With the assistance of the administrative staff, Nthakoana Sibeko and Nelly Msimango, and Ntando Maweni, our architect intern, they organise our events, issue certificates, run e-mail campaigns and issue our newsletter.

We are looking forward to a very productive 2024!

**Arch. Janet Saaiman**

# TREASURER'S REPORT 2023

ARCH. DANIEL VAN DER MERWE



---

GIFA has shown a healthy growth financially for the financial year July 2022 to June 2023 as we recovered from the impact of the Covid pandemic and the stabilising and positive influence of our new executive manager who took her position in January 2023.

The collective stewardship of our Mancom and the assistance of our vice-treasurer further contributed towards an improvement in financial- discipline, transparency, and protocols. Increases in income derived from sponsorships, events and membership fees allows for a healthier financial sustainability. We have ringfenced cash assets to clear up past SARS VAT backlogs and we have managed to clear all outstanding PAYE dues.

We appointed new service providers, Snow Bookkeepers and TLB Accountants, whose services have allowed us to greatly improve our general bookkeeping, accounting procedures, monthly financial management reports, auditing, and budgeting forecasts. Instituting monthly financial committee meetings has proven very beneficial in ironing out historical financial issues, and in setting targets and goals in terms of increasing income and in trimming expenditures where possible.

After many years we have finally managed to have our Treasurer registered as the official SARS representative for GIFA. This, updating our CIPC registrations, workman's compensation, public liability insurances and other legal obligations now ensure that GIFA adheres to acceptable norms of accounting, financial reporting and complies with all the requirements of local legislation.

## Summary of financial position:

- Our total assets including cash and office equipment shows a healthy increase to **R649 903** versus the R352 376 recorded for 2021-2022. This shows an increase of nearly 87% over the last financial year which then indicated the effects of the Covid pandemic.
- Our profit for the financial year shows an improvement at **R220 328** over the reported profit of R 175 483 of the previous year. This is despite an increase in our overall annual expenditure to R 949 336 from a previous R 685 412, which is largely attributed to an increase in office rentals, upgrades to our IT, website, software, computer equipment, and salaries. Our income for the financial year 2023 was **R1,910,268** an increase from our 2022 income which was R1,724,318 further offsetting our expenses.
- Cash flow also showed a healthy improvement with cash reserves sitting at **R 629 207** at the end of June 2023, versus the low of R 261 776 recorded in 2022.

### Gauteng Institute For Architecture

Annual Financial Statements for the year ended 30 June 2023

#### Statement of Financial Position as at 30 June 2023

Figures in Rand	Note(s)	2023	2022
<b>Assets</b>			
<b>Non-Current Assets</b>			
Property, plant and equipment	2	19 113	-
<b>Current Assets</b>			
Trade and other receivables	3	1 583	90 800
Cash and cash equivalents	4	629 207	261 776
		<b>630 790</b>	<b>352 376</b>
<b>Total Assets</b>		<b>649 903</b>	<b>352 376</b>
<b>Equity and Liabilities</b>			
<b>Member's interest and reserves</b>			
Retained income		252 132	31 804
<b>Liabilities</b>			
<b>Current Liabilities</b>			
Trade and other payables	5	397 771	320 572
<b>Total Equity and Liabilities</b>		<b>649 903</b>	<b>352 376</b>

### Gauteng Institute For Architecture

Annual Financial Statements for the year ended 30 June 2023

#### Detailed Income Statement

Figures in Rand	Note(s)	2023	2022
<b>Revenue</b>			
Rending of services		1 910 268	1 724 318
<b>Cost of sales</b>			
Purchases		(744 737)	(866 211)
<b>Gross profit</b>		<b>1 165 531</b>	<b>858 107</b>
<b>Other income</b>			
Discount received		-	897
<b>Operating expenses</b>			
Accounting fees		(85 498)	(8 250)
Bank charges		(4 563)	(5 006)
Commission paid		(20 225)	-
Computer expenses		(139 324)	(78 654)
Depreciation, amortisation and impairments		(1 124)	-
Discount allowed		-	(1)
Employee costs		(429 267)	(533 459)
Internship program		(21 400)	-
Insurance		-	376
Lease rentals on operating lease		(191 227)	(41 160)
Motor vehicle expenses		(66)	(7)
Petrol and oil		(800)	(890)
Postage		(874)	(908)
Printing and stationery		(11 164)	(3 799)
Staff welfare		-	(469)
Telephone and fax		(32 089)	(12 634)
Training		-	(2 600)
Transport and freight		(1 595)	(2 211)
		<b>(948 536)</b>	<b>(885 412)</b>
<b>Operating profit</b>		<b>216 995</b>	<b>173 292</b>
Investment income		4 133	2 093
Finance costs		-	(202)
		<b>4 133</b>	<b>1 891</b>
<b>Profit for the year</b>		<b>220 328</b>	<b>176 483</b>

The past five months of our financial activities for the new 2023-2024 cycle have shown a continuation of the overall improvement in our financial status with increases in income and prudent discipline in keeping expenses in check. The income for this period 1 July 2023 to 31 October is recorded at R774,993 and expenses at R359,538, with an increase in profit from R220,328 to R415,455. The executive manager has also done a budget for the next cycle, ensuring further continuity and profits.

# EXECUTIVE MANAGER REPORT

## 2023



---

I am pleased to present the annual report of the Gauteng Institute for Architecture. This report provides an overview of the institute's activities, achievements, and initiatives undertaken during the past year.

### **Executive Summary**

The Gauteng Institute for Architecture continues to be a leading force in fostering a greater awareness of architecture and promoting the built environment. Under the guidance of the Management Committee, the institute has made significant strides in fulfilling its mission.

### **Membership and Community Engagement**

The institute has seen a steady increase in membership, reflecting a growing interest in architecture. Various events, seminars, and workshops were organized to engage members and the wider community. These initiatives not only facilitated networking among professionals but also contributed to the institute's role as a hub for knowledge exchange.

### **Educational Programs**

Our commitment to education remains strong, with the successful implementation of diverse educational programs. These programs are aimed at enhancing the skills and knowledge of our members, as well as fostering the next generation of architects. The institute partnered with renowned educators and professionals to deliver high-quality content and ensure that our members stay abreast of the latest developments in the field.

### **Committees and Task Forces**

The Management Committee, led by President Architect Olivier Galenge, worked diligently to appoint committees and task forces focused on specific areas of interest. These groups played a vital role in driving initiatives related to sustainability, innovation, transformation, and professional development. Their efforts have been instrumental in advancing GIfA's goals and objectives.

### **Advocacy and Public Awareness**

The institute actively engaged in advocacy efforts to promote architecture at both local and national levels. Collaborative projects with governmental bodies such as the DPWI and other industry stakeholders such as CBE and JBCC as well as with the industry regulator SACAP and GIfA's affiliate SAIA, were initiated to underscore the importance of architecture in shaping sustainable,

transformative, and aesthetically pleasing environments.

### **Financial Overview:**

The institute maintained a sound financial position throughout the year, thanks to prudent financial management and the support of our members. Income generated from membership fees, events, and sponsorships was strategically allocated to fund key initiatives, ensuring the sustained growth of the organization.

### **Future Outlook**

Looking ahead, GIfA remains committed to its mission of serving its members and promoting greater awareness of architecture and the built environment. Strategic plans include further expansion of educational programs, increased advocacy efforts, and the continued strengthening of our community engagement initiatives.

In conclusion, GIfA has experienced another successful year under the leadership of the dedicated Management Committee. The collaborative efforts of our members and committees have been pivotal in advancing the institute's objectives. As we move forward, we are confident in our ability to make a lasting impact on the architectural landscape and continue to be a driving force for positive change.

**Louda van der Merwe**

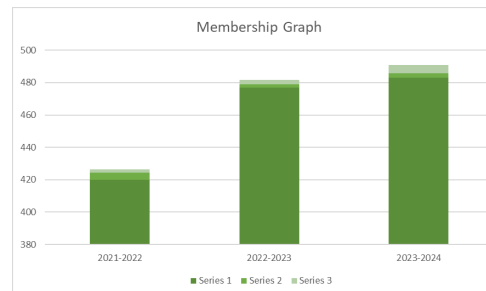
# MEMBERSHIP REPORT 2023



This report provides a comprehensive overview of the current status of our architectural membership ahead of the Annual General Meeting (AGM). It encompasses membership statistics, new members, benefits, challenges, and recommendations to strengthen our membership base and further the goals of our organization.

The architectural membership of our organization forms the core foundation of our collective vision and endeavours. As we approach the AGM, it is vital to understand the status of our membership, acknowledge our achievements, and strategize for an even more prosperous future.

Below is the graph that shows a slight growth in membership mainly due to this cycle having been opened to free membership for Architectural students.





### **New Members and Payments 2023-2024**

We warmly welcome the new Professional Architects, Professional Senior Architectural Technologists Architectural Draughts persons, and Students Architects members who have joined our architectural institute since the new cycle resumed. Lastly, we would like to thank our members who have paid their fees and we encourage those that have not paid to contact the membership department to make payment arrangements.

### **Membership Benefits**

Our architectural members enjoy a host of benefits, including networking opportunities, access to industry resources, professional development through workshops and seminars, and participation in community projects. We continue to enhance these benefits to meet evolving professional needs.

### **Challenges and Opportunities**

- Strengthen marketing efforts to attract more architects, particularly young professionals.
- Enhance engagement through interactive events and workshops.
- Collaborate with educational institutions to encourage student memberships and involvement.
- Leverage social media and online platforms for greater outreach and engagement.

### **Conclusion**

Our architectural membership forms the bedrock of our organization. By acknowledging our achievements and understanding the current landscape, we can collectively work towards a more vibrant and successful future.

### **Next Steps**

Following the AGM, we will actively implement the proposed recommendations, monitor progress, and continually assess and refine our strategies to ensure the sustained growth and vitality of our architectural community.

Compiled by **Nthakoana Sibeko**

# PRACTICE COMMITTEE REPORT 2023

## COMMITTEE MEMBERS

**Arch. Maria Paschini  
(Convenor)**

Arch. Tania Glavas

Arch. Rudd van Deventer

Arch. Richard Cook

Arch. Mark Hansen

---

2023 has had its challenges and the Practice Committee has made progress in several areas.

Johannesburg's online system has still had issues although its functionality has improved since last year. The shutdown of the COJ offices in September had a major impact on submission of plans but CoJ have issued a list of contact persons and details after our request to do so. Of particular concern is the archiving of plans which the committee will address with CoJ in early 2024. Other discussions included council not checking the category of professional registration when plans are submitted, and that PI certification is not required when submitting plans. This is crucial since the council is indemnified from errors when approving building plans. These issues will be attended to by the committee in the new year. Self-certification by architects as initiated by the committee last year has been picked up by the SAIA Practice Committee as an option to deal with council submissions.

All Practice Committee documentation has been transferred to Gifa's Google Drive account and we are working on the FAQ portal.

The committee submitted responses for the SACAP CPD proposals. Discussions and comments were sent to SAIA around SACAP's desire to take Estates to court over the issue of restricting homeowners to using professional architects only. Several discussions around professional fees have taken place and proposals will be sent to SACAP in the new year.

The PPE Workshop was presented successfully, and the Practice Committee gave an "Ask the Practice Committee" webinar which produced insightful discussions around practice issues. We hope to give this webinar quarterly.

Our breakfasts have continued on the first Thursday of every month and have included diverse talks from architects and other specialists. We would like to thank all our guest speakers who presented as follows:

- January/February – How BIM ready are you? by Architect Rudd van Deventer
- March – Landscaping by Adri Neuper
- April – Heritage approvals by Architect David Gurney
- May – GBCSA membership initiative by Dash Coville
- June – Moving like a rich kid by Tuliza Sindi
- July – Surviving Covid with a new architectural practice - Architect Catherine Moronell
- August – Architecture and Urbanism/ Intervening Across Scales by Architect Monica Albonico Sack
- September – Projects the DPW is rolling out and how those can be addressed by Architect Linda Felix Mampuru
- October – AI in Architecture by Architect Lloyd Bussio
- November – Drawing in Architecture, the thinking hand by Architect Thorsten Decker

A heartfelt thank you to the Practice Committee members – Architects Tania Glavas, Richard Cook, Mark Hansen and Rudd van Deventer.

# EDUCATION COMMITTEE REPORT 2023



Arch. Monica  
Albonico (Convenor)



Arch. Alex Oppenheimer



Arch. Janet Saaiman



Arch. Nomonde Gwebu

---

We are pleased to report that 2023 has been a positive and productive year. As a committee, we have managed to consolidate our working relationship and with the active support of GIFA's management team have successfully delivered on the key activities and tasks planned for this year.

The education committee is set to strengthen the relationship between the profession and the educational institutions. It includes reaching out to schools and places of learning to promote the role and requirements to become an Architect, and Architecture as a profession of choice. It also aims at creating awareness about the built environment and the contribution that critical thinking and design make in shaping our memorable and everyday spaces.

Following our mission and objectives, this year has been about exploring new ways of reaching out to the members and the public. This materialised primarily through the delivery of the "New Architecture Now. Exhibition. This took place on 7th September at SAIA's offices. The exhibition was curated by Papercut Studio with the direct support and curatorial mentorship of Alex Oppenheimer, committee member and UJ representative. It received the invaluable support and energy of members from The Young Professional Forum (YPF), who provided input and logistical support throughout the conceptualisation and delivery of the exhibition. Special thanks also to the students who worked tirelessly to make it happen.

**"IF YOU CAN'T FLY THEN RUN, IF YOU CAN'T RUN THEN WALK, IF YOU CAN'T WALK THEN CRAWL, BUT WHATEVER YOU DO YOU HAVE TO KEEP MOVING FORWARD".**

MARTIN LUTHER KING JR

The exhibition aimed at showcasing the work from all Gauteng universities, displaying didactic methodologies, topical design explorations, processes, and applications. It featured communication and representation skills that were embedded in the work and material exhibited, illustrating, design processes, technical drawings, renders, short videos, concept models, and beautifully crafted physical models. The event was well attended and received, creating the opportunity to bring together students from different universities, as a space of converging, conversation, reflection, and engagement. This initiative was supported by two CPD sessions engaging with the content and themes of the exhibition.

The work ahead for the 2024 year will include further engagement with educational institutions and engaging with new pedagogies related to the teaching of architecture with the view of strengthening the relationship between academia and the profession. . Organising "New Architecture Now #2" and continuing the engagement with RIBA and other professional institutions to introduce effective programmes

to support and attract young professionals and students to join Gifa and help shape new ways of supporting and serving our membership.

I would like to take this opportunity to thank all education committee members, for their time and dedication and across committees, everyone who helped make this year a memorable and successful year for Gifa, for their inspiration and collaborative approach. We will keep abreast of change and keep moving forward.



## CPD Sub- Committee Report

During 2023, we accredited and re-accredited 23 educational courses.

The courses ranged from multiple presenter presentations to in-depth exploration of specific topics. Quite a couple of courses address the Business of Architecture, contract and project administration, computer applications and all the different facets of running a successful architectural practice.

Please contact us if you want to present a course or share your knowledge.

Arch. Janet Saaiman & Arch. Moeketsi Phori

# YOUNG PROFESSIONALS FORUM

## REPORT 2023



David Allen



Liam Hildebrand



Arch. Joshil Naran



**Arch. Nomonde  
Gwebu (Convenor)**



Ntando Maweni



Ethan Fredericks

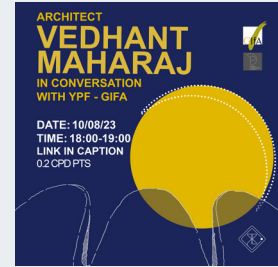
---

### 2023 Overview

In 2023 YPF continued hosting online event events called “Conversations”. The talks are an informal platform to discuss innovative practices in architecture with young, up and coming professionals or students who have made outstanding contributions to the profession. YPF has held conversations with Thuto Vilakazi about ways of monetizing one’s creative potential; Tuliza Sindi about building a dream career as an architect or architect academic and Vedhant Maharaj about running a busy and successful practice as a young South African architect.

New Architecture Now was an energetic collaboration, including the education committee, YPF, student volunteers and input from staff at the various universities. This event would ideally become an annual opportunity to reflect on the work of emerging architects across the represented architectural learning sites.

Progress was made in developing YPF social media platforms, mainly during the marketing of the described events.



## 2024 FOCUS



### Gifa REGISTRATIONS

We aim to increase student and young professional Gifa registrations by simplifying the process (perhaps to a link format)



### CONVERSATIONS

Target 4 conversations (quarterly)



### SOCIAL MEDIA

We plan to develop a social media presence

- LinkedIn
- Instagram
- Facebook

# HERITAGE COMMITTEE

## REPORT 2023

### COMMITTEE MEMBERS

#### **Arch. Amanda Breytenbach (Convenor)**

PSAT David Gurney

Arch. Yasmin Mayat

Arch. Mabela Qhobela

Arch. Brendan Hart

Arch. Brian McKechnie

---

In 2023, the Heritage Committee reflected on the 2022 online lecture series and feedback that related to a contemporary understanding and interpretation of Heritage. In response to the feedback, committee members Brendan Hart and Yasmin Mayat (Mayat Hart Architects & Heritage Consultants), proposed the presentation of a GIFA Venice Biennale Lecture Series to celebrate the work of peers who exhibited at the Biennial. This year's Venice Architecture Biennale had a particular focus on Africa, and several South African Architects and GIFA members were privileged to be a part of it. The Venice Architectural Biennale is described as possibly the most influential architecture exhibition in the world, and with prominent South African Architects participating in the 2023 event, it required appropriate public recognition and discussion.

The series of lectures, therefore, aimed to look at each participant's exhibition, its design, and making, and through a discussion, understand their contributions to the representation of South African architectural thinking to the world. The 2023 Biennale was curated by Prof Lesly Lokko, who aimed to introduce a strong African presence at the event. Through a "laboratory of the futures" theme, Prof Lokko invited visitors to view Africa as a place to learn from and the exhibition as a place of productive exchange.

#### **30 August 2023: In-person launch of the event:**

A Belgotex-sponsored event. In-person introduction to the event with a small exhibition and panel discussion.



## ONLINE PRESENTATIONS AND DISCUSSIONS

06 September 2023

### VENICE BIENNALE LECTURE SERIES - SESSION 1

Kate Otten Architects and Craig McClenaghan  
Architecture

Session 1 looked at the work of Kate Otten  
Architects with their installation 'threads' and  
Craig McClenaghan Architecture with their  
installation 'Letters from the Landscape'.

Session chair: Q&A session led by Ngjillan Faal

11 October 2023

### VENICE BIENNALE LECTURE SERIES - SESSION 2

Lemon Pebble Design, Office 24/7 Architecture  
and Wolff Architects

The second lecture in the series looked at the  
work of Johannesburg-based Lemon Pebble  
Design and Office 24/7 Architecture with their  
installation "Drawing Memory Into Being" and  
Cape Townbased Wolff Architects with their  
installation "Tectonic Shifts".

Session Chair: Q&A session led by Prof Hannah Le Roux

08 November 2023

### VENICE BIENNALE LECTURE SERIES - SESSION 3

The South African Pavilion and MMA Design  
Studio

The third lecture in the series looked at the  
South African Pavilion by Dr. Sechaba Maape, Dr.  
Emmanuel Nkambule, and Mr. Stephen Steyn  
followed by Arch. Mphethi Morojele of MMA  
Design Studio with their installation "Origins, The  
Secret of our Invisibility".

Session chair: Q&A session led by Brendan Hart

### Other Events:

In addition to the Venice Bienalle lecture series, the following event was hosted in September (Heritage Month):

### 11 September 2023 Navigating the National Heritage Resources Act (online)

The National Heritage Resources Act governs all of South Africa's built heritage but is often misunderstood. This talk, by heritage architects Yasmin Mayat and Brendan Hart, explained and demystified the Act, identified heritage buildings, and made applications to the Provincial Heritage Resources Authority Gauteng (PHRAG).



Biennale Architettura 2023

DANGEROUS LIASONS

Drawing Memory Into Being

Office 24/7 Architecture & Lemon Pebble  
Architects

# UNIVERSAL DESIGN COMMITTEE

## REPORT 2023



Arch. Nadira Haripersadh  
(Convenor)



Arch. Hiten Bawa



Arch. Jason Mazaham

The GifA Universal Design Committee was established in July of this year, highlighting GifA's dedication to excellence in architecture. Universal design, defined as the art and science of designing products, systems, and built environments that are inclusive and usable by all persons regardless of their abilities, serves as a focal point for the committee's initiatives.

This report outlines the aims, objectives, and endeavours of the Universal Design Committee in advancing inclusion within the built environment. This is achieved through the dissemination of knowledge and awareness regarding universal design principles, with the overarching goal of creating spaces that are accessible and accommodating for people of diverse abilities, thereby fostering an inclusive and equitable environment for all.

### AIMS

- **Promoting Universal Design**

Foster a culture within the architectural profession that recognizes the significance of Universal Design.

- **Raising Awareness**

Increase awareness about the principles and benefits of Universal Design.

- **Advocating for Inclusion**

Encourage the integration of inclusive design practices in architectural projects to enhance accessibility and usability for all individuals.

### OBJECTIVES

#### Collaboration

Foster collaboration among design teams, consultants, and stakeholders to ensure Universal Design is considered from project inception to completion.

## Research and Innovation

Encourage research and innovation in Universal Design by supporting projects that explore new ideas and technologies.

The primary objective of the initiative is to heighten awareness of universal design principles among architects, built environment professionals, and the public. By deepening the understanding of inclusive design, the goal is to influence decision-making processes in the built environment, ultimately creating spaces accessible to everyone.

## ROLE PLAYERS

Architects Hiten Bawa and Jason Mazaham have joined the committee, contributing their expertise and personal perspectives. Since July, the team has published numerous news articles showcasing universal design as a progressive and insightful approach to design. Additionally, the committee has represented GifA at industry meetings, webinars, and online events centred on the transformation agenda. The focus for 2023 was committee establishment, stakeholder engagement, and awareness creation.

## 2024

In 2024, the committee plans to:

- Advocate for policy changes.
- Stay abreast of industry trends.
- Pursue training and development opportunities.
- Engage with end-users.
- Host interactive and experiential events.

The committee looks forward to expanding its network and influence in 2024 as we continue to champion the agenda for Universal Design

Did you know that on the 3<sup>rd</sup> of May 2023, **South African Sign Language** became the 12<sup>th</sup> Official Language of South Africa?



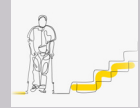
We are committed to the implementation of universal design principles and work tirelessly towards diversity, inclusion and transformation goals

## 2024 GifA Accredited Universal Design Courses

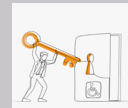
1. Universal Design: Disability Awareness for Built Environment Professionals
2. Universal Design: Understanding the South African Legislative Framework
3. e-Learning series - Designing for Persons with Disabilities:



Emergency Evacuation



Vertical Circulation



Doors, Windows, Safety & Security



Furniture & Fixtures



Sanitary fittings & Accessories



Landscaping, Entrances & Wayfinding



# SOCIAL MEDIA AND WEBSITE REPORT 2023

## SOCIAL MEDIA INSIGHTS

### FACEBOOK

GifA has 10 new views.  
1h · GifA

Shirley Louise Wallington and Lizette De Swardt have their birthdays today. Let th...  
14 h

GifA reached 1.4K people in the last 7 days.

- Remove this notification
- Report issue to notifications team

4300 Followers

### INSTAGRAM

Professional dashboard

Insights 24 Oct-22 Nov

- Accounts reached 4157 +55.2%
- Accounts engaged 392 +58.1%
- Total followers 2194 +2.0%
- Content you shared 157

Your tools [See all](#)

- Achievements
- Ad tools

2194 Followers

### LINKEDIN

Post analytics

0% (Scaling backends for Authentication passed this 1x)

2023 GIFA Award Entry  
Vote for your favourite project [https://linkd.in/votefifa/](#)  
Heath Marais Drink...

Discovery 993 Impressions

Engagements

Reactions

Comments

Reports

Video performance

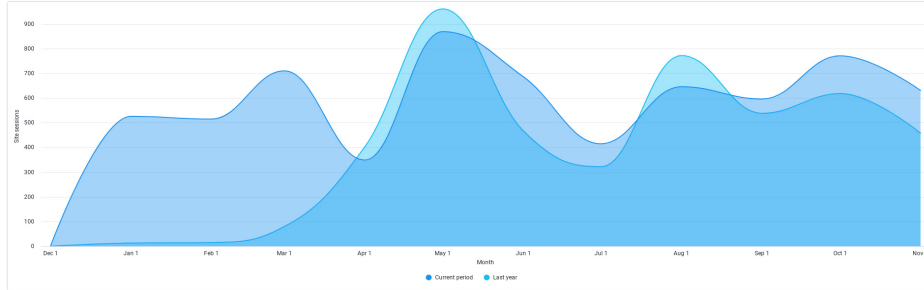
320 Views	297 Likes	42.6 % (Video views)
-----------	-----------	----------------------

5 836 Followers

# WEBSITE INSIGHTS

## Traffic over Time (comp line)

Select a time period in this year Compare to is Last year Group by is Month Select a measure is Site sessions Exclude bots is Yes



## New vs returning visitors



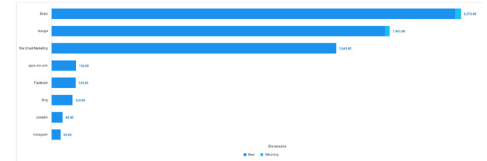
- New  
94% • 2,883
- Returning  
6% • 173

# 6 715

SITE VISITS SINCE  
JANUARY

## Site visitors

Time Period: Jan 1 - Nov 26 2023



Source: Google Analytics

## GifA's Global reach



# GIFA MEMBERS 2023

Arch. AGYARE-DWOMOH KWASI

Arch. AKINLADE ABIOLA TAIWO

Arch. ALSFINE DAVID

Arch. ANALO OKWUDILI ANDREW

Arch. ANSARA GERRARD ALEXANDER

Arch. AREFF MOHAMED FARHAD

Arch. ARMSTRONG WILLIAM MALCOLM

Arch. ASPOAS JENNIFER CLAIRE

Arch. ATIYYA KARINE

Arch. BAIKIE TANIMU USMAN

Arch. BAKOS SHELDON DENNIS

Arch. BALINDA GILBERT

Arch. BEAN KATHRYN JANE

Arch. BESTER WERNER MARLO

Arch. BESTER DARREN

Arch. BEWSHER WARREN

Arch. BHAM AHMED SABER

Arch. BHODHO ENERST

Arch. BLIGNAULT CHADD

Arch. BISHOP MICHAEL EDWARD RODERICK

Arch. BOITETO UJWANG

Arch. BONIFACE DEAN JEFFREY

Arch. BOORSMA GEORGE PIETER

Arch. BRANDT DIETER DE WAAL

Arch. BREGMAN ADINA LOUISE

Arch. BUSSIO LLOYD

Arch. BROOKS EDWARD MARTYN PAES

Arch. CAMPKIN-SMITH JOY MEGAN

Arch. CAVANAGH KIRSTIN JEANNETTE

Arch. CESMAN CRAIG MARK

Arch. CHAPMAN THOMAS PATRICK

Arch. CHIBWE LAURENCE

Arch. CHINELLI SERGIO

Arch. CHINYOKA SIBONGINKOSI

Arch. CLARKE NADINE

Arch. CLARKE SAMANTHA

Arch. CRONJE DANIELE

Arch. COOK RICHARD PETER

Arch. COUYADIS SPIRO

Arch. DAVIES ROGER DAVID

Arch. DE FREITAS PEREIRA VANIA

Arch. DE JAGER MARIANUS

Arch. DEMBO HOWARD

Arch. DEN DRIJVER RUAN

Arch. DE SOUZA CATHERINE LOVELL

Arch. DODD HEATHER MARGARE

Arch. DOVEY MICHAEL JOHN

Arch. DUBE FREEMAN

Arch. DU PLESSIS WYNAND FREDERIK

Arch. DU PLESSIS NICOLAAS PIETER

Arch. DUKES LYALL DONALD

Arch. DUNSTAN BRYAN DAVID

Arch. FAIRBAIRN KIM GRATTAN

Arch. FAIRBAIRN DAEL JANINE

Arch. FAN YU-WEI (ANDY)

Arch. FELDMAN JACQUELINE RUTH

Arch. FERREIRA JOSE CARLOS ALMEIDA

Arch. FORDYCE-SANDERS KATHERINE ELEANORE

Arch. FRIEDLAND MATTHEW JACOB

Arch. FROWEN PHILIPPA KATHERINE

Arch. FURNESS DAMION ROBERT

Arch. GALENGE TULULA OLIVIER

Arch. GARONGA LAMECK DAVIDSON

Arch. GATES JORDAAN PAMELA JANE

Arch. GLAVAS SULTANA

Arch. GOTTSCHALK CHRISTIAN

Arch. GOVENDER THIRESHEN

Arch. GRANT GEORGE WILLIAM

Arch. GRAY (NEE CLANCY) AISLING EVITA

Arch. GREEN WARREN ROLAND

Arch. GROSSKOPFF BRIGET LEE

Arch. HAMITY HUGO ALBERTO

Arch. HANSEN LUDWIG CLAUS

Arch. HARIPERSADH NADIRA

Arch. HARLECH-JONES TIMOTHY DALE

Arch. HARTMAN MURRAY

Arch. HERBERT ANDREW

Arch. HEREDIA NORA ADRIANA

Arch. HERNANDEZ RUIZ LUIS FRANCISCO

Arch. HEYDENRYCH KATHERINE MARY

Arch. HINDE KEVIN AINSLEY

Arch. HINDSON MARK RICHARD

Arch. HINZE MICHAEL

Arch. HOLLIS DAVID IAN

Arch. HOOD-RABINOWITZ LARA FRANCES

Arch. HOPF DEREK JOHN

Arch. HORZOOK OMAR

Arch. HUYBERECHTS XAVIER MARIE CECILE JOSEPH

Arch. IANIGRO MASSIMO MICHELE MARIO

Arch. IGLESIAS RODRIGUEZ HECTOR

Arch. JACOBS HENDRIK LEONARD

Arch. JACOBS JAMES PAUL

Arch. JACOBZ CARL VICTOR

Arch. JAGER AMANDA LOUISE

Arch. JAMES SHELLEY ELIZABETH

Arch. JENKINSON KERRIDWYN ANNE

Arch. JESCHE FRANZ

Arch. JOHNSON TIMOTHY CHARLES

Arch. JOHNSON TIMOTHY MARTYN  
Arch. JOOSUB HAROON OMAR  
Arch. KABWIRI MARTIN  
Arch. KACHIPANDE CHIYEMBEKEZO CLARENCE  
Arch. KANAKAKIS STAMATIA  
Arch. KAPPOS IOANNIS  
Arch. KARANDREAS KATERINE  
Arch. KARINI ATIYYA  
Arch. KATZ JULIAN ROBERT  
Arch. KEULER KAREL STEPHANUS  
Arch. KHANYILE BONGA  
Arch. KINYUA DANIEL KANJANGUA  
Arch. KIPROTICH CHARLES J  
Arch. KGAFELA GORATA BONTLE  
Arch. KHANYILE BONGA MPUMELELO  
Arch. KOK BAREND CHRISTIAAN  
Arch. KOMANYANE PHENYO PETER  
Arch. KOSTER MIREILLE REINIKA THEODORA  
Arch. KOORTZEN BW  
Arch. KOZAS MELANIE ANNE  
Arch. LACOVIG ALESSIO  
Arch. LAHAYE PIERRE MANUEL  
Arch. LANIER THOMAS PIERRE JACQUES  
Arch. LAUDER JANET ALEXANDRA  
Arch. LAW JENNIFER

Arch. LE BRON CHANTELE AMY  
Arch. LEN JARROD WAYNE  
Arch. LE ROUX JOHANN PHILLIP  
Arch. LEROTHOLI QEFATE  
Arch. LETHOLA BOKANG  
Arch. LEVICK PATRICK GIDEON  
Arch. LEVIN LEWIS  
Arch. LEVIEUX JANIS MOIRA  
Arch. LEWISON MARTIN  
Arch. LIDCHI ELIANE  
Arch. LINDEQUE HANNE-MARIE  
Arch. LOGIE JARMILA KATERINA  
Arch. LOSABA KEITSITSE  
Arch. LOVELL TREVOR  
Arch. MAAG SANDRO  
Arch. MAGNUS GRANT RICHARD  
Arch. MAHARAJ VEDHANT  
Arch. MAILER KAREN CAROLINE  
Arch. MAINA DAVID NDEGWA  
Arch. MAJEKODUNMI OLUFEMI  
Arch. MAKHAOLA LEROTHOLI  
Arch. MBATHA AFRICA  
Arch. MAKOLOMAKWE MOGOROSI ABRAHAM  
Arch. MALLANDAIN NICHOLAS IAN  
Arch. MANASOE MILISANI

Arch. MANNING JONATHAN EDMUND  
Arch. MANYADZA THOMAS  
Arch. MARSH RUAN  
Arch. MARTIN PERNILLE MOLLEBAEK  
Arch. MARTINEZ ISIDRO LARDIN  
Arch. MASEMOLA DIPHETHLO  
Arch. MARQUES LUIS SANDRO PAULO LARANJA  
Arch. MASEROW ADRIAN NEVILLE  
Arch. MASHABANE PHILLEMONT NDABAKAYISE  
Arch. MASHEGO KGAU BONAVENTURE  
Arch. MASIA KARABO  
Arch. MASON KEITH FRANK  
Arch. MATETOA MATLA GIDEON  
Arch. MAUZE SIBUSISO CLEMENT  
Arch. MAYAT YASMIN  
Arch. MCCLENAGHAN CRAIG IAN  
Arch. MCGILLIVRAY DONALD JOHN  
Arch. MCINERNEY PATRICK JOHN  
Arch. MCKECHNIE BRIAN KENT  
Arch. MEIER CORNELIS WALDO  
Arch. MEYBURGH ALBERTUS LAMBERTUS  
Arch. MICHAEL ELEKTRA ELENI  
Arch. MICHAELS JULIAN  
Arch. MILLAR MATTHEW  
Arch. MIREMBER JENNIFER  
Arch. MOLDOVANOS THOMAS

Arch. MOROJELE MPHETHI MALUNGA  
Arch. MOROLDO ADRIANO  
Arch. MORSE NATALIA SARAH  
Arch. MOYO THEMBALETHU  
Arch. MPOFU NIKILE KEITH  
Arch. MSISKA MAVUMBANYA ULUNJI  
Arch. MUTUA JACK ALLAN MUSAU  
Arch. MUVEVI TAPIWA TIMOTHY  
Arch. MZUMARA MARTINS PEARSON  
Arch. NARSAI NAINA SHARAD  
Arch. NASSIMBENI LORENZO  
Arch. NAYLER PATRICK CHARLES  
Arch. NDERITU NDEGWA  
Arch. NGOBENI NHLAMULO  
Arch. NEL KRYNAUW  
Arch. NYATHI THANDO  
Arch. NJOBE SIPHO WINTSHANA  
Arch. NSABIYERA EMMANUEL LEONARD  
Arch. NZUZA SANELE NUMPUMELELO  
Arch. OATES MARK DYLAN  
Arch. OBERHOLSTER JASON  
Arch. OLUWA BABATUNDE ADENIJI  
Arch. ORBELL STEVEN MICHAEL  
Arch. ORSMOND DANIELA

Arch. OJO-AROMOKUDU BABATUNDE OLUKAYODE	Arch. RABANA GAOLEKWE DITEKO	Arch. SEEMULE LEATILE GWAWANDA	Arch. SUNDAYI NATHAN FUNGAYI
Arch. OJO-AROMOKUDU JUDITH TINUKE	Arch. RADFORD JOHN GREGORY	Arch. SELSICK LEANA JUNE	Arch. SZALAVICZ ANCA
Arch. OTTEN KATHERINE MAREE	Arch. RAJOO VIKASH MAHARAJ	Arch. SERMAN ROBERT JOHN	Arch. TAMALA JOSEPH
Arch. OYEWO OLUWAFUNMISHO AKINOYE	Arch. RAMPOU MOFULATSI ISIAH	Arch. SHABANGU MANGALISO CHRISTOPHER	Arch. TERBLANCHE COENRAAD EDUARD
Arch. PAYNE IVAN ALAN	Arch. RASMUSS HENNING EGGER	Arch. SHAIKH ZAYNUL AABEDIN	Arch. THAMBURAN KUMARSEN MOONSAMY
Arch. PALMER GRAEME	Arch. RAZAK TANZEEM	Arch. SHEPHERD CLIVE STANLEY FREDERICK	Arch. TIMM JEFFREY PETER
Arch. PAPAGEORGIOU ANTHONY ARGYRIS	Arch. REHMAN YUSUF	Arch. SHERRATT MARC WILLIAM	Arch. TODISCO NORBERTO EDUARDO
Arch. PARIRENYATWA CHAMISAMOYO	Arch. REID LEIGH JAMES	Arch. SHUBANE (MOLEKETI) LETHLABILE MONICA	Arch. TRIELOFF KAREN
Arch. PARSHOTAM ANIL THAKOR	Arch. RHODES JOCELYN	Arch. SITHEBE DAVID THAMSANQA MANDLA	Arch. TRIANA-MARTINEZ GUSTOVO
Arch. PASCHINI MARIA CATERINA PAOLA	Arch. ROSSITER MICHAEL ROLAND	Arch. SITHOLE SABELO WISEMAN ERIC	Arch. TROMP NADIA
Arch. PATEL (DAYA NEE) PRIYA BALVANTBHAI	Arch. RUDMAN CLIVE GRAHAM	Arch. SMITH DENVER	Arch. TSHETLO BAIKAGILE GALEBOE
Arch. PATEL HITESH SHARATCHANDRA	Arch. RUSSO TATUM	Arch. SILVERA MEDINA EDUARDO ERNESTO	Arch. TSUENE DANIEL
Arch. PAUL CHAD BRANDON	Arch. SAAIMAN JOHN MARTIN	Arch. SMITH JOHN WILLIAM LISTER	DR TUSNOVICS DUSTIN ANDREAS
Arch. PEACOCK ALTHEA GILLIAN	Arch. SAAIMAN JANET	Arch. SPARKS CHRISTOPHER DUANNE	Arch. VALENTIM RAFAELA SARA
Arch. PENCHARZ MARK	Arch. SACK MONICA	Arch. SPENCER FRED DAVID	Arch. VAN BEBBER BOB BERNARDUS
Arch. PHALA MOKGWETSI GIRTZ	Arch. SALERNO NICODEMO	Arch. SPENCER PAUL DAVID	Arch. VAN DEN HEEVER WILLEM ABRAHAM
Arch. PHIRI FRED	Arch. SAMPSON CHADWICK EDUARD	Arch. STACEY JEFF DOWNING	Arch. VAN DER MERWE DANIEL JOHANNES STEFANUS
Arch. PEARCE SEAN	Arch. SAVVIDES BRETT JOHN	Arch. STANLEY WARREN	Arch. VAN DER MERWE HENDICK JOHANNES
Arch. PIENAAR MARIANNE CATHARINA	Arch. SAVVA ARGYRIS	Arch. STEPHAN TYRON	Arch. VAN DE VYVER MARI
Arch. PIETERS PIETER JOHANNES	Arch. SCHAEERER MARK WILLIAM	Arch. STEYN ANDRIES ADRIAAN	Arch. VAN DER MERWE MARTIUS WILHELM
Arch. PLEWMAN NICHOLAS	Arch. SCHOLTEN ESTELLE	Arch. STEYNBERG KRISTEN FAY	Arch. VAN DER MEULEN NICOLAAS JOHANNES PETRUS
Arch. POULSEN LONE	Arch. SCHOOMBEE CORNEL	Arch. STOLS ETIENNE	Arch. VAN DER WIEL REON
Arch. POWELL JOHN LOWRY	Arch. SCOTT Thompson	Arch. STONE JONATHAN HAROLD ARTHUR	Arch. VAN DER WESTHUIZEN FRANCOIS ANDRIES
Arch. PRETORIUS WILLEM STEENKAMP	Arch. SCHULZ GERALD PHILLIP	Arch. STUBBS PAUL KENNETH	Arch. VAN GASS FERDINAND GEORG
Arch. PUTA NOEL CHISANGA	Arch. SEARLE DEBBY FRANCES	Arch. STUCKE KENNETH ANTHONY	Arch. VAN GRAAN CAREL
Arch. QUANSAH FIFI	Arch. SEBOTHOMA DEGRACIA MAKGOMO	Arch. SURE JOSEPH ONJONGA	
	Arch. SECO GABRIELA ALEJANDRA		



### Retired 70

Arch. ARNOLD JOHN HENRY  
Arch. BENTEL LM  
Arch. BEZER CLIVE HENRY  
Arch. BYL ALAN DENNIS  
Arch. CASTANHEIRA AMANDIO GOMES  
Arch. CROSBY MP  
Arch. DAVIES GLYNN BRIAN  
Arch. DU TOIT LESLIE JOHN  
Arch. FELS FELIX  
Arch. FURNESS PETER GARRY  
Arch. GLOCER ALEC  
Arch. HALL LAURENCE SYDNEY  
Arch. HENRY PATRICK JOHN  
Arch. HERBERT GILBERT  
Arch. HOOD GORDON WILLIAM  
Arch. JANKES JACK  
Arch. KRUGER CYRIL JAMES  
Arch. LEES SIMON JOEL  
Arch. LLOYD HOWARD NEWALL  
Arch. MUSIKER MARTIN CHARLES  
Arch. NORWICH ROSE  
Arch. PHILLIPS MAURICE  
DR PIAZZA PETER JAMES  
Arch. PULLON RICHARD AURET  
Arch. SCHLAPHOFF PETER BENJAMIN

Arch. SCHLAPOBERSKY IVAN  
Arch. SUTTON MICHAEL WILLIAM KIDD  
Arch. TALJAARD HENRI  
Arch. TYSER JOHN ARTHUR JAMES  
Arch. VAN NIEKERK ABRAHAM FREDERIK  
Arch. VAN TONDER CD  
Arch. VEALE HILLARY  
Arch. VICTOR STANLEY  
Arch. VOSLOO CHRISTO  
Arch. WALLIS BRYAN LOVELL  
Arch. WHEELER GRAHAM FRANCIS  
Arch. YAWITCH BORIS

### Past Presidents

Arch. Walter Reid 1909-1910  
Arch. R. Howden 1911  
Arch. H.G. Veale 1912  
Arch. W.H. Stucke 1913  
Arch. J.E. Beardwood 1914  
Arch. Walter Reid 1915  
Arch. E.H. Waugh 1916  
Arch. D.A. McCubbin 1917  
Arch. M.J. Harris 1918  
Arch. D.N. Burton 1919  
Arch. D.M. Sinclair 1920  
Arch. E.M. Powers 1921  
Arch. J.S. Donaldson 1922  
Arch. F.L.H. Fleming 1923

Arch. Allen Wilson 1924  
Arch. G.S. Burt Andrews 1925  
Arch. N.T. Cowin 1926  
Arch. J. Lockwood-Hall 1927  
Arch. F. Williamson 1928  
Arch. H.N. Porter 1929  
Arch. Prof. G.E. Pearse 1930  
Arch. S.C. Dowsett 1931  
Arch. C.C. Deuchair 1932  
Arch. A.S. Furner 1933  
Arch. G.E. Gordon Leith 1934  
Arch. V.S. Rees-Poole 1935  
Arch. W.G. McIntosh 1936  
Arch. H.G. Tomkyns 1937  
Arch. D.S. Haddon 1938  
Arch. R. Martienssen 1939  
Arch. R. Howden 1940  
Arch. A.S. Furner 1941  
Arch. W.G. McInStosh 1942  
Arch. N.L. Hanson 1943  
Arch. D.M. Cowin 1944  
Arch. W.A. Macdonald 1945  
Arch. J. Fassler 1946  
Arch. C.E. Todd 1947  
Arch. W.D. Howie 1948  
Arch. C.C. Irvine-Smith 1949  
Arch. H.G. Porter 1950

Arch. R.C. Abbott 1951  
Arch. J.N. Cowin 1952  
Arch. B.S. Cooke 1953  
Arch. C.M. Sinclair 1954  
Arch. H.G. Summerley 1955  
Arch. M.L. Bryer 1955-1956  
Arch. D.M. Calderwood 1957-1958  
Arch. S.W.R. Gildenhuys 1958-1959  
Arch. Doreen Greig 1959-1960  
Arch. H.N. Joubert 1960-1961  
Arch. M.D. Ringrose 1961-1962  
Arch. J.S.B. Taylor 1962-1963  
Arch. C.M. Sinclair 1963-1964  
Arch. Wynand Smith 1964-1965  
Arch. Doreen Greig 1965-1966  
Arch. J.G.O. Watson 1966-1967  
Arch. J.N. Gowin 1967-1968  
Arch. E.N. Finsen 1968-1969  
Arch. G.H. Andrews 1969-1970  
Arch. T.J. Louw 1970-1971  
Arch. M.D. Lennard 1971-1972  
Arch. M.D. Ringrose 1972  
Arch. E.N. Finsen 1973  
Arch. Wynand Smith 1974-1975  
Arch. G.J.B. Gallagher 1976  
Arch. W.O. Meyer 1977  
Arch. H.M.J. Prins 1978-1979

Arch. J.M.G. Gordon 1980-1981  
Arch. D Mci. Glennie 1981-1983  
Arch. L.R.M. Fee 1984-1985  
Arch. Alvd Westhuizen 1986-1987  
Arch. O.E. Powell 1988-1989  
Arch. Prof. G.E. Pearse 1991-1993  
Arch. Mira Fassler 1993-1996  
Arch. Nigel Vos 1997-1998  
Arch. Khotso Moleko 1998-2000  
Arch. Hugh Fraser 2000-2004  
Arch. Kwazi A Dwomoh 2004-2006  
Arch. Motsepe Fanuel 2006-2008  
Arch. Clarence Kachipande 2008-2010  
Arch. Mpheti Morojele 2010-2012  
Arch. Daniel Van Der Merwe 2012-2015  
Arch. Kumarsen Thamburan 2015-2017  
Arch. Nadia Tromp 2017-2019  
Arch. Krynauw Nel 2019-2021  
Arch. Olivier Galenge 2021-2023

#### Retired 70/40

Arch. ABRAMHAMSON AL  
Arch. AMOILS ALAN  
Arch. BENINGTON DEREK CHARLES  
Arch. BERGENTHUIJN JOHANNES GYSBERTUS  
Arch. BERGENTHUIJN NOELINE GARDIOL  
Arch. BOLD PETER BRIAN  
Arch. CARTER WILLIAM JOHN  
Arch. CRUICKSHANK IAN GRANT STEWART  
Arch. DUNN JOHN PATRICK  
Arch. ELK PERCY MERVIN  
Arch. FABEL CARL ERNST  
Arch. FANDAM RONALD DESMOND  
Arch. FASSLER KAMSTRA MIRA (Honorary)  
Arch. FAVRE ETIENNE  
Arch. FEE LAWRENCE ROBIN MORGAN  
Arch. FRASER IAN CAMERON  
Arch. GROSSKOPFF RODNEY EDWARD  
Arch. HAARHOFF FRANCOIS DENNIS  
Arch. HARVEY KENNETH GORDON  
Arch. HERSON JAMES  
Arch. HOWARD BRIAN HENRY  
Arch. HURWITZ MICHAEL  
Arch. KAPLAN MORRIS  
Arch. KLAWANSKY MORRIS LOUIS (TICKEY)

Arch. KRÜGER MAURITZ LEON  
Arch. LOGIE JARMILA KATERINA  
Arch. LUPINI ITALO CARLO  
Arch. MACMULLEN KEITH GEORGE  
Arch. MARKOVITZ MARK ELLIE  
Arch. MILLIKEN DENNIS COLIN  
Arch. NEL CASPARUS JOHANNES  
Arch. ORSMOND NEVILLE  
Arch. PEELS ALBERTUS HENDRICUS  
Arch. PEENS LOUIS  
Arch. PIENAAR FRANCOIS HUGO  
Arch. POWELL BASIL WILLIAM  
Arch. RADOMSKY HYMIE  
Arch. RAWLINSON EDWARD DAVID MORGAN  
Arch. ROBINSON DANIEL HILDYARD  
Arch. SACK MONTY  
Arch. SCHOLES MICHAEL KENNETH  
DR SENIOR JOHN BARRY  
Arch. SHAPSHAK MINNIE SYLVIA  
Arch. SHAW ARTHUR LESLIE  
Arch. STEEL CHRISTOPHER RONALD GORDON  
Arch. TAYLOR SHONA  
DR TONDOLO MARIA LORETTA  
Arch. VAN DEVENTER RUDD  
Arch. WILREKER HANS HELMUT  
Arch. YEAMAN WILLIAM HARPER

#### **Life Members**

PROF. GUEDES AMANCIO D'ALPOIM MIRANDA  
Arch. KIRCHHOFER MAX  
Arch. SEGAL STANLEY HAROLD

#### **Honorary Members**

Arch. FASSLER KAMSTRA MIRA  
Arch. MOTSEPE FANUEL JOHN CHRISTOPHER CHAANE  
PROF. RICH BRIAN ROBERT PETER

#### **Candidate Architects**

CANT GWEBU NOMONDE  
CANT HART BRENDAN ROBERT  
CANT MILNE ANDREW WALLACE  
CANT SNASHALL DAMIAN

#### **Architectural Technologists**

PAT McIntosh Stuart James  
PAT MUGWAGWA CHARLES  
PAT Schoeman Marthinus  
PAT SELLO RETSELISITSOE NELSON

#### **Architectural Draughtsman**

PAD MERRINGTON CRAIGE ANTHONY  
PAD MOLOI TSHEPO LUCKY  
PAD NGUQU NYANISO TRUEMAN

#### **Student Membership**

GRUBER ADELINE  
NGIBUINI JASON  
STOKES KEGAN MICHAEL  
WATSON MICHAEL KEVIN  
KYLE MOTHOMOGOLO  
AVELA SWANA  
ORATILOE LETLKOA  
ORATILWE TSOTSOTSO  
MEGAN KARAM  
MOHAU NGOBENI  
DAVID ALLEN  
LIAM HILDERBRAND  
THANDO JACQUES ZWANE

## SPONSORS



R103 Old Main Road  
Cato Ridge  
KZN, South Africa  
3680

info.safalsteel@safalgroup.com

+27 31 782 5500

www.safalsteel.com/



Raceway Industrial Park  
10 Silverstone Street  
Germiston  
1401

jansen.w@daikin.co.za

+27 11 997 4400

www.daikin.co.za/



15A Riley Road Cato Ridge  
Bedfordview, Germiston  
2007

admin@claybrick.org.za

+27 11 805 4206

www.claybrick.org/



19 North Reef Road  
Bedfordview East, Germiston  
2008

info@uniontiles.co.za

+27 11 663 2000

www.uniontiles.co.za



20 Wyers Road  
Alrode South  
Alberton, Johannesburg

info@supertechceiling.co.za

+27 11 868 4901

www.supertechceiling.co.za/



Emerald Park Block 2, Corporate  
Park South  
22 Reedbuck Crescent  
Old Pretoria Road  
Midrand, Johannesburg  
1683

+27 11 207 5600

www.ledvance.com



20 Wyers Road  
Alrode South  
Alberton, Johannesburg

[info@supertechceiling.co.za](mailto:info@supertechceiling.co.za)

+27 11 868 4901

[www.supertechceiling.co.za/  
en.rockfon.international/contact](http://www.supertechceiling.co.za/en.rockfon.international/contact)



Plot 84 Short Street  
Muldersdrift  
Johannesburg  
1739

[sales@eva-last.com](mailto:sales@eva-last.com)

+27 10 593 9220

[www.eva-last.co.za/](http://www.eva-last.co.za/)



Unit 12 Sunninghill Office Park  
43 Peltier Drive  
Sunninghill, Johannesburg  
2157

[info@bakerbaynes.com](mailto:info@bakerbaynes.com)

+27 11 568 2060

[www.bakerbaynes.com](http://www.bakerbaynes.com)



1 on Jameson Ave  
Cnr. Glenhove Rd. & Jameson Ave  
Melrose Estate, Johannesburg

[info@belgotex.co.za](mailto:info@belgotex.co.za)

+27 80 001 4777

[www.belgotex.co.za/](http://www.belgotex.co.za/)



Dick Kemp Street  
Meadowdale, Johannesburg  
1619

[shauneez.naidoo@corobrik.co.za](mailto:shauneez.naidoo@corobrik.co.za)

+27 11 871 8719

[www.corobrik.co.za](http://www.corobrik.co.za)



**TELEPHONE**

+27 10 006 5566

**EMAIL**

[membership@gifa.org.za](mailto:membership@gifa.org.za)

[enquiries@gifa.org.za](mailto:enquiries@gifa.org.za)

**WEBSITE**

[www.gifa.org.za](http://www.gifa.org.za)

---